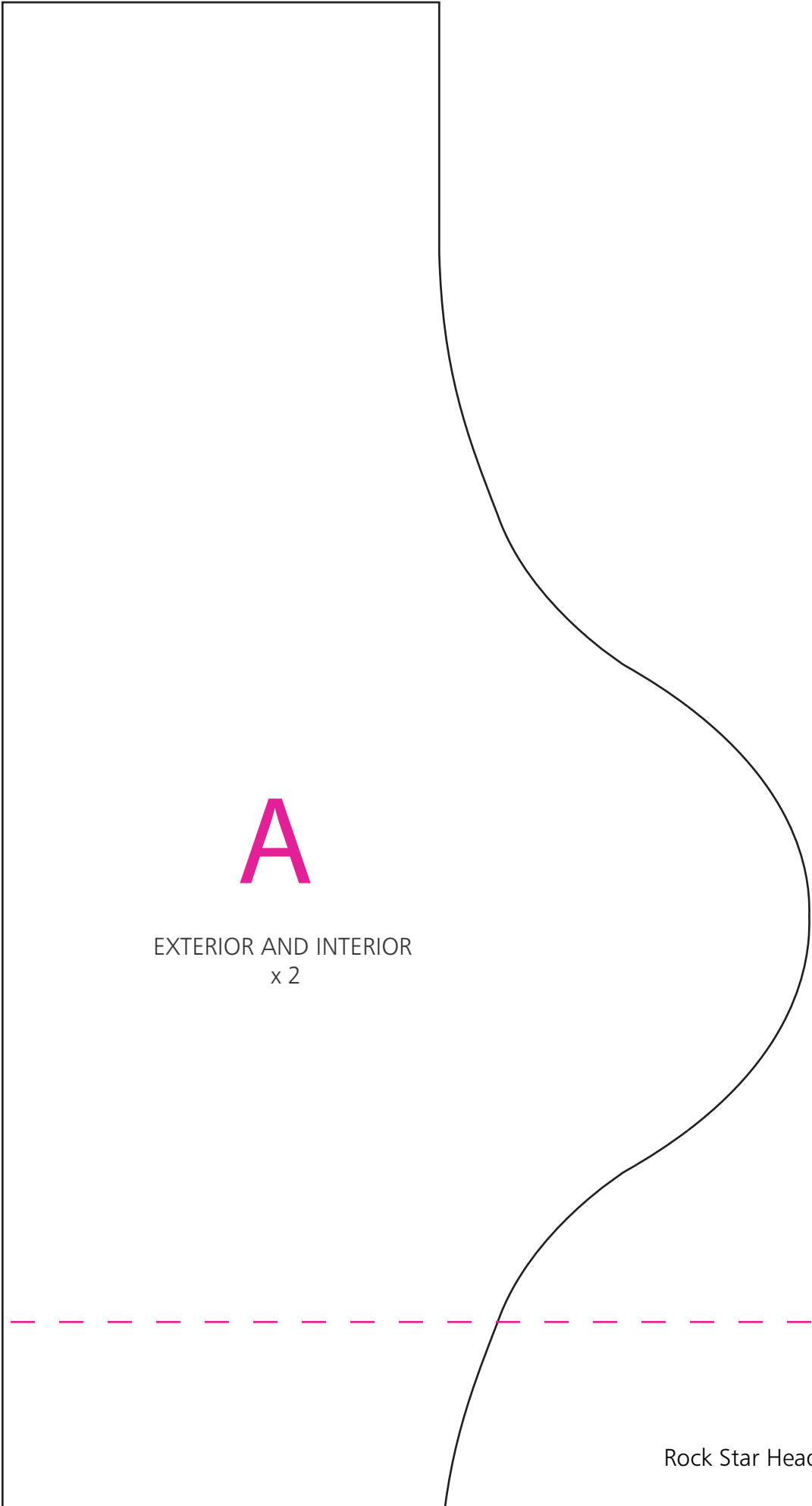
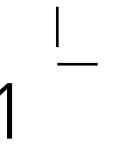


Tiling Guide

To assemble tiled templates:

1. Print the PDF on 8 1/2" x 11" sheets.
2. Trim the pages along the crop marks.
3. The pages contain an overlap area indicated with a dashed pink line.
4. Align the pages so that the pink dashed lines overlap and tape the tiled pages accordingly. Each tiles page contains a tile number that will help you determine which tiles to tape together.

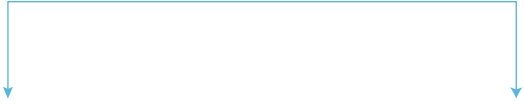


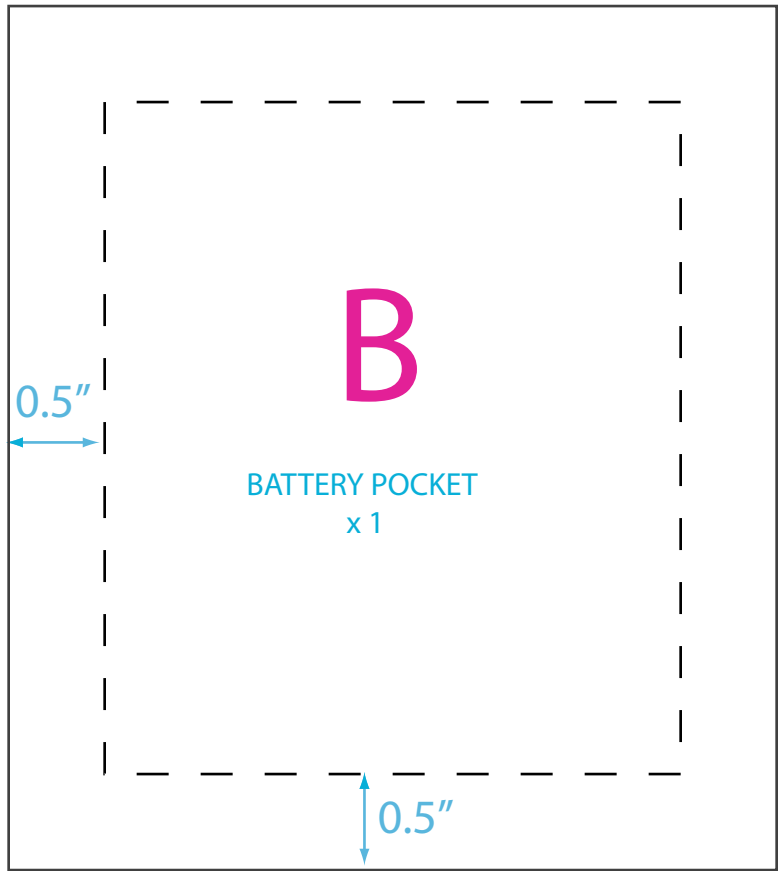
A

EXTERIOR AND INTERIOR
x 2



FOLD LINE





SEWING GUIDE

..... Negative conductive path

..... Positive conductive path

